

## SUPPORT NETWORK

### Experience Our Mobile Van Service For Fast And Reliable Solutions



#### ADDRESS:

##### North Zone

ESCORTS LTD - CONSTRUCTION EQUIPMENT  
4<sup>th</sup> Floor 409, Jasola Vihar  
Elegance Tower, Near Apollo Metro Station  
New Delhi -110019

##### East Zone

ESCORTS LTD - CONSTRUCTION EQUIPMENT  
Eco Centre, Ambuja Neotia,  
609, 6<sup>th</sup> Floor, EM Block,  
Salt Lake Sector-V, Kolkata – 700 091

##### West Zone

ESCORTS LTD - CONSTRUCTION EQUIPMENT UNIT 1,  
3<sup>RD</sup> FLOOR, A-WING, TIMES SQUARE,  
ANDHERI - KURLA ROAD, OPP MITTAL INDUSTRIAL ESTATE,  
ANDHERI (EAST), MUMBAI 400059 (MAHARASHTRA)

##### South Zone

ESCORTS LTD - CONSTRUCTION EQUIPMENT  
First Floor, bearing No - FF 2, in Subham Square,  
Survey Number 41/9, 1st Main Road and 1st Street,  
Tarambakkam, Porur,  
Chennai - 600 116

## WHEN YOU NEED EXTRA **2712 XTR**



Low Creep speed - 1.3 Kmph | SLI - Safe Load Indicator | Reverse Parking Camera  
EMS - Equipment Monitoring System | LED Work lamp on Boom



# ESCORTS WHITE LINE

Customer Support No.:  
**1800 180 4488**

e-mail:  
[ece.marketing@escorts.co.in](mailto:ece.marketing@escorts.co.in)

Escorts Construction Equipment: Plot No. 219, Sector-58, Ballabgarh- 121 004, Faridabad, Haryana (INDIA) Tel.: 0129-2306574/2306598/2306571  
Fax: 0129-2306572 Website: [www.escortsgroup.com](http://www.escortsgroup.com)

(Timings: 9.30 am - 6.00 pm, Monday to Friday)

# SPECIFICATIONS

## RATED CAPACITY

27 Ton at	1.5 m radius
4.2 Ton at	8.5 m radius
Max Hook Height	12.1 m

## ENGINE

Diesel engine of Volvo Eicher make, model CEV BS III, turbo charged water cooled, developing 137 HP @ 2200 ERPM

## TRANSMISSION & CLUTCH

Drive	Mechanical- 2WD (Rear Wheel Drive) with Hi/Lo
Type	VECV: 6F+1R Transmission
Clutch	Dry Friction Plate
Speeds	12 forward and 2 reverse
Max Travel Speed	40 kmph
Creep Speed	1.3 Kmph
Gradeability	35% (Unladen)

## STEERING

Full Power orbital with twin Hydraulic double acting cylinders	
Type	Fixed Steering Column
Articulation	Up to 35° on either side
Turning Radius	9.1 m (Outer) / 6.4 (Inner)

## CONTROL VALVE

Main Control valve - Proportional control valve hydraulically actuated through joy stick, 3 spool double acting with a built in relief and auxiliary valves  
 Outrigger Control Valve - 3 spool manual proportional control valve with built in pressure relief valve

## AXLES

Front	Dead Axle-Rigid Mounting
Rear	TATA Drive Axle- Mounted on Leafspring

**STRUCTURE** Frames and boom are fabricated with high tensile steel plates, sections and with proven technology.

**OPERATOR'S CAB & CONTROLS** Operator cabin with steel constuction, excellent visibility for craning operation, adjustable seat, automotive type controls like steering wheel, brakes, accelerator pedal, gear shifting etc.

**Note:** Technical modifications reserved. All dimensions & weights are variable within ± 5% over Indicated Values.

## BRAKES

Service	Front brake Pneumatically assisted hydraulic brakes and Rear brake Fully Air operated Brakes
Parking	Spring Loaded, Air-released Brakes on Rear Axle

## TYRES

Front	12 x 24 - 20PR [4 Nos.]
Rear	17.5 x 25 - 20PR [2 Nos.]

## BOOM

3 Part Boom- Hydraulically Powered & Fully Synchronised  
 Luffing Range -3° to + 65°

## HOIST MECHANISM

6 Falls , Hydraulic Winch

## ELECTRICAL SYSTEM

24 V Negative Earth,150 AH x 2 Battery

## DIMENSIONS

Wheel Base	4800 mm
Overall Length	10475 mm
Overall Width	2870 mm
Overall Height	3100 mm
Front Wheel Track	2230
Rear Wheel Track	2080

## OPERATING WEIGHT TRAVEL WORK (BOLTABLE PWT)

Front Axle Weight	8600	7600
Rear Axle Weight	10200	12100
Total Weight	18800	20070

## CAPACITIES

Fuel Tank	200
Hydraulic Tank	170

## SAFETY SYSTEM

Safe Load Indicator  
 Overhoist audio warning system  
 Counter balance protection valve in the lift line against hose burst.  
 Safety brake on hoist  
 Visual warning against parking brakes ON

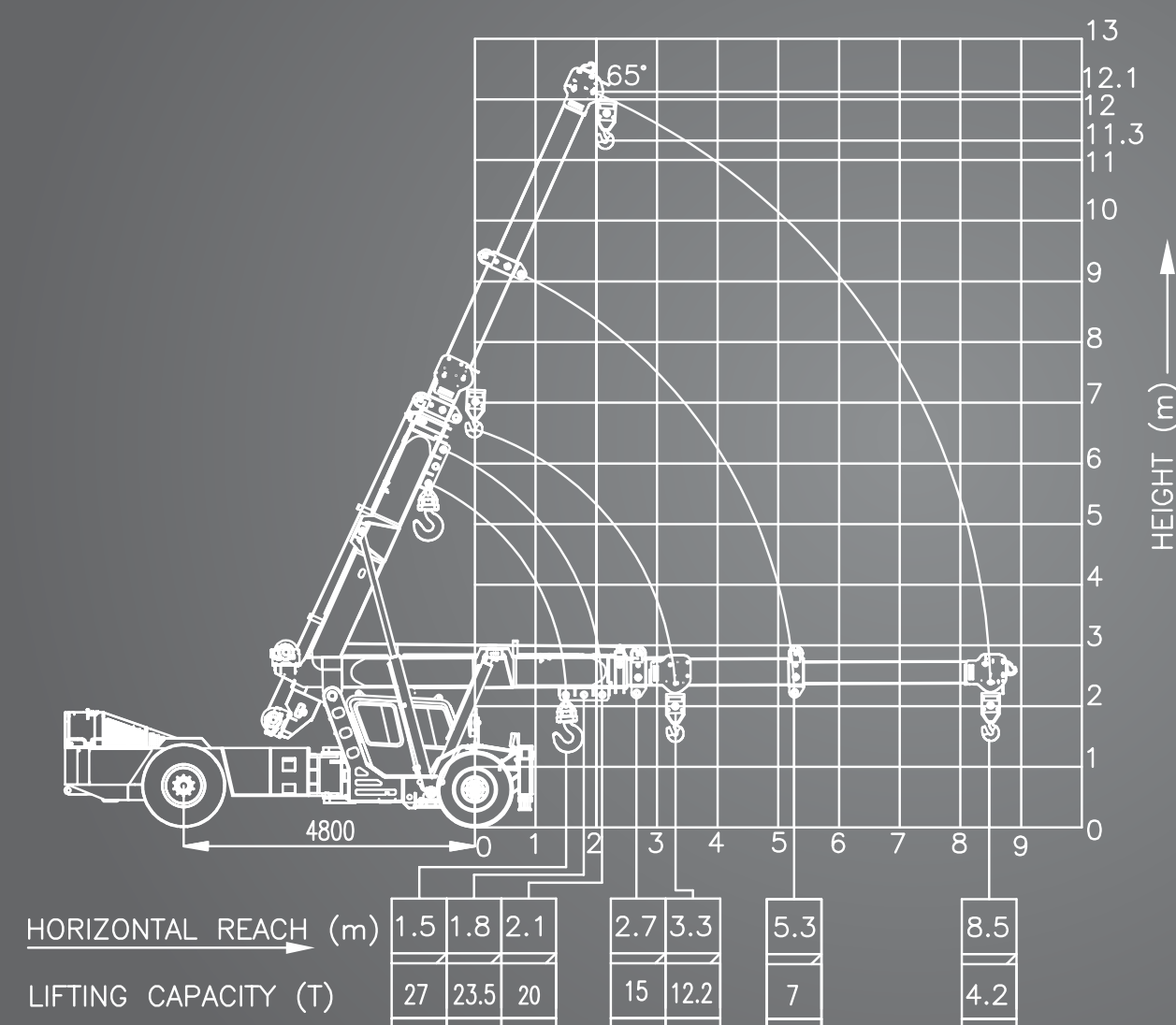
## STANDARD ACCESSORIES

Drag Winch - Line pull 2500Kg  
 Operator Cabin  
 Rear view mirror  
 Reflectors  
 Turn Indicator & Reverse lamp  
 Lockable battery box  
 Mobile Charger  
 Cabin Fan  
 Tyre Guard  
 Reverse Parking Camera  
 Telematics  
 Tow Hook  
 Articulation Lock

## OPTIONAL ACCESSORIES

Water Bottle Carrier  
 Beacon Light  
 Led Work lamp on Boom

# TECHNICALS



Rate loads are calculated for operation on leveled surface.



SLI – Safe Load Indicator



Drag Winch



Reverse Camera



Helper Seat